



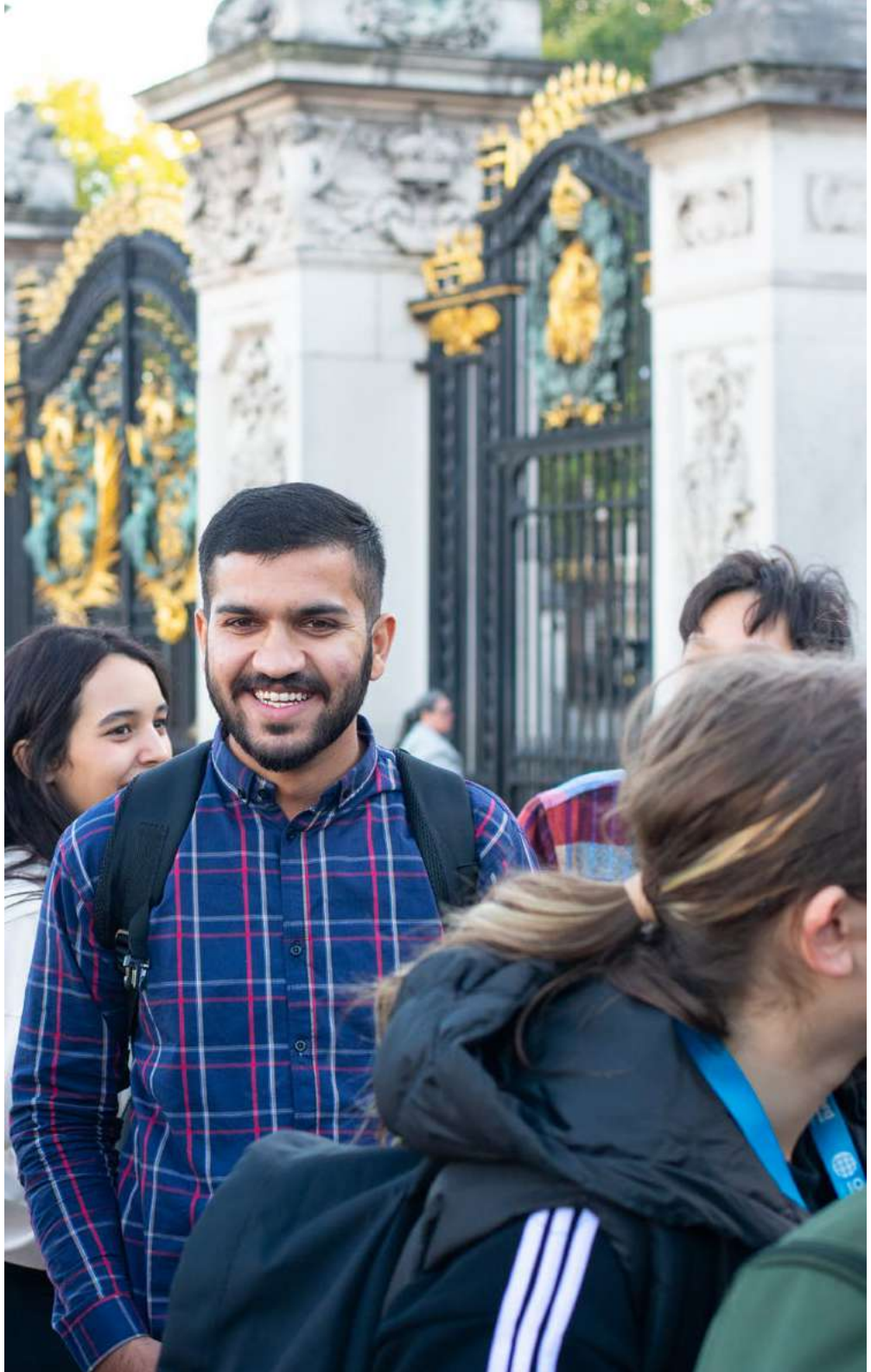
Your Advantage starts here

2024 - 2025



Contents

3	Discover	35	Student Experience
5	The Oxford International Advantage	37	Bespoke social programmes
7	Preparing you for success	39	Academic support
9	International Foundation Diploma	41	Life in Oxford
11	Who is this pathway for?	43	Accommodation in Oxford
13	What will you study?	47	Welcome to the London Centre
15	After your International Foundation Diploma	49	London Centre campus
23	Dates and fees	51	Social programme
25	How to apply	53	Life in London
27	Student route in the UK	55	Accommodation in London
31	Welcome to the Oxford Centre	56	Your digital pathway college
33	Oxford Centre campus		



Discover

The Oxford International Pathway College offers a range of courses designed to support international students to access thousands of university degrees at a choice of two study locations, Oxford and London.

Together with Oxford International's thirty years of teaching expertise, our pathway colleges give you level 3 business programme content and assessment, combined with English language and study skills to ensure that you are fully prepared to progress to a UK university.

Studying with Oxford International Pathway College will give you the best teaching delivered by qualified tutors in an educational environment.

The choice is yours.



About Oxford International Education Group

Founded in 1991, Oxford International is an accredited, private education provider that operates international colleges and English language centres across the UK and North America to create life-enhancing experiences for students worldwide.

Our courses help over 50,000 international and UK students achieve academic success every year. We have built strong relationships with education consultants around the world and pride ourselves on delivering the best programmes for their students.

The Oxford International Advantage

Our pathway college is a supportive and welcoming place for international students. This environment, together with specialist support and the high-quality of programmes, allows you to develop the study skills you need for university.




Focused Content

Our courses include business modules tailored to your level of study. Each pathway prepares you in a variety of subject areas for those seeking a career in business, finance, management and more.



Intensive Study

Our pathways are intensive courses designed to enable you to progress to your university of choice as quickly as possible. This period of study is dependent on the programme you choose.



Progression Options

Once you successfully complete your pathway course with us, you can progress to one of our partner universities across the UK.



International Community

The diversity of our students is what gives Oxford International its unique atmosphere and energy and we are proud to accept students from across the world.



Individual Support

Our small class sizes ensure you are given the individual attention and personalised support required to thrive in your studies.



Expert Tuition

Our specialist teaching staff have years of experience teaching English and academic courses and supporting international students to achieve their goals.



"The quality of course provision and curriculum is excellent."

ISI Report 2022



Preparing you for success

At each centre, our dedicated staff understand the challenges that overseas students face when they come to the UK to study a language. We will help you to settle in, reach your learning goals, make new friends and explore your chosen city.

Your future success is our priority and we want you to know that our staff at the college are here to help you reach your goals both in and out of the classroom.

We offer the following dedicated services at our colleges to ensure you feel fully supported whilst studying with us:



ACADEMIC SUPPORT

Every week



UNIVERSITY COUNSELLING



STUDENT PROGRESSION SUPPORT



SUPERVISED STUDY SESSIONS



SOCIAL PROGRAMME

We host a variety of fun, interactive and diverse activities where you will get to meet friends for life via our packed social and leisure programmes.



ONLINE LEARNING PLATFORM

You will have access to our online learning platform 24/7 once you join the college.

International Foundation Diploma

The International Foundational Diploma is your level 3 pathway to an undergraduate degree at one of our 20+ university partners in the UK.



QUICK FACTS

Available Study Mode

Face-to-Face
Online (p55)

Subjects

Business

Tuition Fee

£14,995

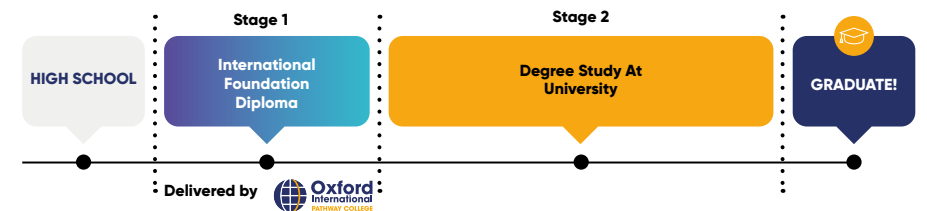
Level of Study

NQF Level 3

The International Foundation Diploma pathway is available to study in Business at both the Oxford Centre and the London Centre.

This course takes 7 months to complete, covering fundamental principles and theoretical skills which are the standard criteria for entry into university.

Your Journey



Who is this pathway for?

This pathway course is particularly suited to international students who do not qualify for direct entry to university level study

Meet Huu Loc Tran one of our students at the London Centre



Scan to watch

Carefully designed to prepare you for undergraduate study at a university of your choice, the International Foundational Diploma will strengthen your English language and academic skills while developing your knowledge in Business topics such as Marketing and Human Resources.

Our team of specialist tutors has put in effort to ensure that the curriculum is challenging yet manageable, with many opportunities for students to put theory into practice.

In addition, our students benefit from having a dedicated support team to assist them throughout the university application process and provide guidance on matters such as visa application, accommodation options, and financial aid.

TAKE NOTE

Start Dates

January | April | September

Duration

7 months

Assessment

The IFD is assessed 45% by coursework and 55% by examination

Academic Entry Requirements

We accept a variety of qualifications for progression onto the International Diploma pathway. For a list of accepted qualification by country of origin please visit [oxfordinternational.com/country-requirements](https://www.oxfordinternational.com/country-requirements)

If you have taken iGCSE the requirement is as follows:

iGCSE's with 5 passes at Grade A to C

English Language Requirements

In order to begin your programme you will need to provide proof of your English language level.

	International Foundation Diploma
Language Cert	33 (B1 LRWS test)
IELTS	4.5
PTE Academic UKVI or PTE Home	43
Skills for English (UKVI)	Pass (Lower intermediate test)
TOEFL iBT	N/A-Non SELT
ELLT	
Password	
Duolingo	
NCUK EAP	

What will you study?

During the pathway, you will study modules that are core to business and others designed to develop the required skills and knowledge to successfully study at university level.

Modules

Introduction to Accounting and Finance

This module introduces students to the basic mechanisms and processes of financial accounting in both theory and practice and so prepare them for degree studies in business subjects.

Digital Literacy

This module enables students to enhance their basic IT skills and further develop research skills through the appropriate use of the internet.

Data Analysis

The aim of this module is to enable students to apply data to work towards solutions of real-life problems. To achieve this, students are introduced to basic statistical concepts, topics and methods. They also become familiar with basic statistical packages to help them collate and present data in forms that help them analyse and interpret it effectively.

Business Functions

The aim of this module is to provide students with a basic introduction to the study of business and management by presenting the standard departments within a business, such as finance, marketing and human resource management.

International Business Management

This module looks at business structures and the impact of internal and external factors on business growth and development. It introduces students to approaches to management and leadership within businesses and how thinking about management has developed over time.

Introduction to Economics

This module provides students with a basic introduction to the study of Macro and Microeconomics, introducing them to relevant economic theories, concepts and terminology and to explain the importance of key topics such as demand and supply, the economic problem, the allocation of scarce resources and elasticity, specialisation, productivity, economies of scale and monopoly.

Project Study

Students are introduced to the skills required to plan, research, prepare for, write up and deliver a topic within their subject area. They have the opportunity to study all aspects of a project related to their particular field of study and to identify and develop a range of skills to enable them to realise the project, from the original concept, to research methods most suited to the chosen topic chosen.

UK Government and Society

This module provides students with a basic introduction to government and society in the British Isles, including a historical element showing briefly how Britain has changed and developed since 1945. The module considers external pressure on government – lobbyists, pressure groups, NGOs and the role of the media and, in its concluding weeks, we sum up the state of British democracy in the early 21st century and how Britain relates to, influences and is influenced by the wider world, social and environmental impact and sustainability with students reporting their findings both in written form and through a presentation.

After your International Foundation Diploma

Our team can help you choose the right study option once you have successfully completed the International Foundation Diploma.



Bristol University



Anglia Ruskin University



University of Hertfordshire



Swansea University



Falmouth University



Coventry University



University of Hull



Bournemouth University



University of Reading



Oxford Brookes University



Ravensbourne University



University of Central Lancashire



Royal Holloway University of London



University of Dundee



University of Roehampton London



University of the West of England Bristol



University of Greenwich (only for London Centre Students)



De Montfort University



Staffordshire University



University of the Creative Arts (UCA)

All applications to our university partners will be assessed by the university and will be subject to their entry requirements.

Bristol University



Top 10 Best UK Universities

(Times Higher Education 2023)

University of Bristol is one of the six original 'red brick' universities and is part of the Russel Group.

This university offers students a wide range of courses to choose from across Arts, Engineering, Health Sciences, Life Sciences, Social Sciences and Law.



Falmouth University



Ranked 151st worldwide

(QS World University Rankings 2023)

Creativity is at the heart of Falmouth University, it is vital to all areas from fine art to robotics, events management to marketing. Industry connections, professional facilities, in-house agencies and a challenge-led approach to teaching mean students are doing it for real from day one.

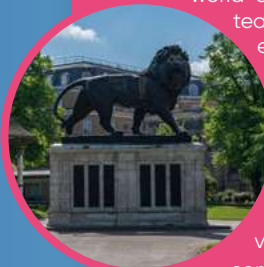
University of Reading



Top 30 Best UK Universities

(Times Higher Education 2023)

Discover the **University of Reading**, a global university that enjoys a world-class reputation for teaching, research and enterprise.



Reading prides itself for its pioneering history, bright prospects, green environment, central location and vibrant international community.

Royal Holloway University of London



Top 30 Best UK Universities

(The Times and Sunday Times Good University Guide 2023)

The prestigious Royal Holloway University of London is part of the University of London group and is one of the UK's leading research-intensive universities, with 19 academic departments spanning the arts and humanities, sciences, social sciences, management and economics. As the UK's most international university, they combine world-class research with a global perspective.

University of Greenwich



Top 10 University in the UK for best Students' Union

(StudentCrowd 2022)

"Over 1 in 5 of students come from outside the United Kingdom."

Greenwich Campus sits on a world heritage site and is located in the heart of Greenwich, south-east London. The neighbourhood has a lively atmosphere but is away from the hustle and bustle of London, making it the ideal place to study.



Anglia Ruskin University



Top 30 Best UK Universities

(Times Higher Education 2023)

Nestled in close proximity to the vibrant city centre of Cambridge, **Anglia Ruskin University (ARU) Cambridge** features an inviting and thriving campus.

Coventry University



Top 60 Best UK Universities

(The Guardian University Guide 2023)

Coventry University is on a single-site campus, which means necessities are all within a few minutes' walk. The university is a major presence in Coventry, contributing to its friendly and vibrant atmosphere as well as resulting in varied successful business partnerships.



Find out more about our University Partners at

[oxfordinternational.com](https://www.oxfordinternational.com)



University of Dundee



Top 30 Best UK Universities

(Times Higher Education 2023)

The **University of Dundee** aims to transform lives, working locally and globally through the creation, sharing and application of knowledge. We pride ourselves in offering a wide range of subjects to study and world class teaching facilities.



De Montfort University



Top 10 British Universities Supporting Student Startups

(Higher Education Statistics Agency (HESA) 21/22)

De Montfort University (DMU), strives to be 'The Empowering University' because their supportive and nurturing community of academics, students and advisers empower students to realise their dreams. Courses are carefully design and taught by expert academics to help you gain the skills needed to enter today's competitive jobs market.

University of Hertfordshire



Top 40 Best UK Universities

(Times Higher Education s 2023)

You bring the dream; we'll help you make it at herts. We offer a huge variety of undergraduate and postgraduate Expert guidance and support as well as fantastic links to business we can help make your dreams your reality.

University of Hull



Top 50 Best UK Universities for Research Impact

(The Times Higher Education 2023)



The University of Hull was formed in 1927, making them the 14th oldest university in England. With a proud history of academic excellence and creating and inspiring life-changing research, Hull have a tradition of providing opportunity for all, in a friendly student city.

Ravensbourne University



No.1 Specialist University in the UK

(Department for Education's Longitudinal Education Outcomes 2018)

Ravensbourne is an industry focused university on the vibrant Greenwich Peninsula collaborating with the creative and digital industries to give students the skills and opportunities they need to kick-start their careers.



University of Roehampton London



Top 1 Modern University in London

(Times Good University Guide 2022)

The University of Roehampton is based in south west London on a 54 parkland campus.

Staffordshire University



Top 70 Best UK Universities

(The Guardian University Guide 2023)

'We are the connected university. We're connected to the needs of our students, to business and to society.'

Our industry connections and emphasis on experience make our graduates among the most employable in the UK.

Swansea University



Top 40 Best UK Universities

(Times Higher Education 2023)

This world-leading university is based less than five minutes from Swansea Bay in one of the UK's safest regions. Swansea is a coastal city situated in Wales, less than an hour from Cardiff and three hours from London.



Bournemouth University

Top 70 in the world university rankings

(Times Higher Education Young University 2022)

Bournemouth University (BU) is one of the UK's leading modern universities; they create forward thinking graduates with the skills and flexibility to succeed throughout their career. The courses are designed with direct input from

employers, and they recognise the importance of work experience as part of your degree.



University of Central Lancashire

Top 7% of universities worldwide

(Centre for World University Rankings 2023)

The University of Central Lancashire is the International, multi-campus University tracing its roots back to 1828 and leading the way in modern learning today. And one of the UK's largest universities with a community approaching 38,000.

Oxford Brookes University

Top 50 Best UK Universities

(The Guardian University Rankings 2023)

Oxford Brookes University has over 150 years of history. Started out as a small School of Art in borrowed teaching rooms and have grown into one of the UK's top modern universities with a local, national and international reputation for teaching and research excellence. The university is among the world's top universities in 19 individual subject areas such as English Language & Literature, Engineering and Business and Management Studies (QS World University Rankings by Subject 2023).



University of the West of England Bristol

Top 30 Best UK Universities

(The Guardian University Rankings 2023)

UWE Bristol is an ambitious, progressive university based in one of the UK's most vibrant and creative cities. Here, we're focused on solving future global challenges through outstanding learning, world-leading research and a culture of enterprise.



University for the Creative Arts (UCA)

Top 50 Best UK Universities

(The Guardian University Rankings 2023)

University for the Creative Arts Epsom is home to our Business School for the Creative Industries – the first of its kind in the UK. The campus is close to the centre of town, with its excellent range of shops, pubs and restaurants.



Find out more about our University Partners at



oxfordinternational.com

Dates and fees

Oxford & London Centre

Intake	Course Starts	Course Ends	Course Fees	Progress to University
September 2023	16th September 2023	21st June 2024	£14,995	September 2024
January 2024	8th January 2024	9th August 2024	£14,995	September 2024
April 2024	15th April 2024	29th November 2024	£14,995	January 2025*

*The January intake is only available at the University of Greenwich for students who want to progress onto the BA Business Management degree course.

To find out more about course dates and fees please visit oxfordinternational.com

How to apply

We are accepting applications from students looking to study with Oxford International Pathway College.

Applying to Oxford International Pathway College is easy. To get started, submit your online application at oxfordinternational.com/admissions/apply

To complete your application, you'll need the following:



A copy of a valid passport



A copy of your original qualification certificate and transcripts

Certified translation.



Any current and previous UK visas, CAS and copies of exit stamp. Please also include a copy of any previous visa refusal letters

If non-EU and previously studied in the UK.



Valid proof of English level

Students will be required to sit an UKVI IELTS exam in order to meet the Student Route criteria.

Student route in the UK

Visa information for international and EU students.

VISA INFORMATION FOR INTERNATIONAL AND EU STUDENTS

If you are an EU/EEA/Swiss national, and you will come to the UK to study a full-time programme for more than six months, or are extending your stay to complete your studies, you will need to apply for a Student Route visa.

The new Student Route Visa immigration system was implemented on 1st January 2021. The Student Route opened at 9 a.m. on 5 October 2020 for applications made outside the UK, and only from EU/EEA nationals coming to the UK from 1 January 2021 to study a course which meets the requirements of the route.

Further guidance for EU/EEA and Swiss students can be found here:

www.gov.uk/government/publications/uk-points-based-immigration-system-eu-student-information.



What is the closing date for submitting an application?

We recommend you submit your application as as possible. Courses will be closed as soon as they are full.

How soon can I expect a decision on my application?

Once you submit a completed application – we aim to assess it and respond to you within 24 hours.

How do I apply to University?

We will help you with your application and let you know about all the deadlines. With our guarantee we ensure you get at least two conditional offers and, if you pass the IFY, a guaranteed place.



Have questions?
Why not **talk to one of our students?**

[oxfordinternational.com/
chat-to-our-students](https://oxfordinternational.com/chat-to-our-students)

A photograph of the Radboud University Church in Nijmegen, featuring a large dome and classical columns. The image is overlaid with a semi-transparent blue gradient and three large, overlapping circles in orange, pink, and yellow. The text 'Oxford Centre Pathway College' is centered on the right side of the image.

Oxford Centre

Pathway College



Welcome to the Oxford Centre

The Oxford Centre, located in the heart of Oxford, provides an alternative route to university for international students through a Level 3 International Foundation Diploma. This diploma is designed to serve as an entryway to universities in the UK or abroad.

Our educational purpose is to ensure you receive high-quality teaching and support from a dedicated team of specialist tutors who will help you settle into academic life in the UK. Throughout your time here, you will receive one-to-one support from before you arrive at the college and after you leave.

By successfully completing the International Foundation Diploma, you will have enhanced your general and academic English language and essential study skills to access a great variety of UK degree courses.

You will begin your studies in a diverse and historic city, home to the renowned University of Oxford and our Oxford Centre – it is a charming student city!

While our students experience the best in a social and collaborative environment, we prepare you with

everything you need to embark on the next chapter of your studies.

As a team and a college, we ensure you have a safe and welcoming learning experience. So you feel comfortable in a place where students learn from each other to build a better future.

We look forward to welcoming you to the Oxford Centre.

Meet Clare the
College Director
at the Oxford
Centre



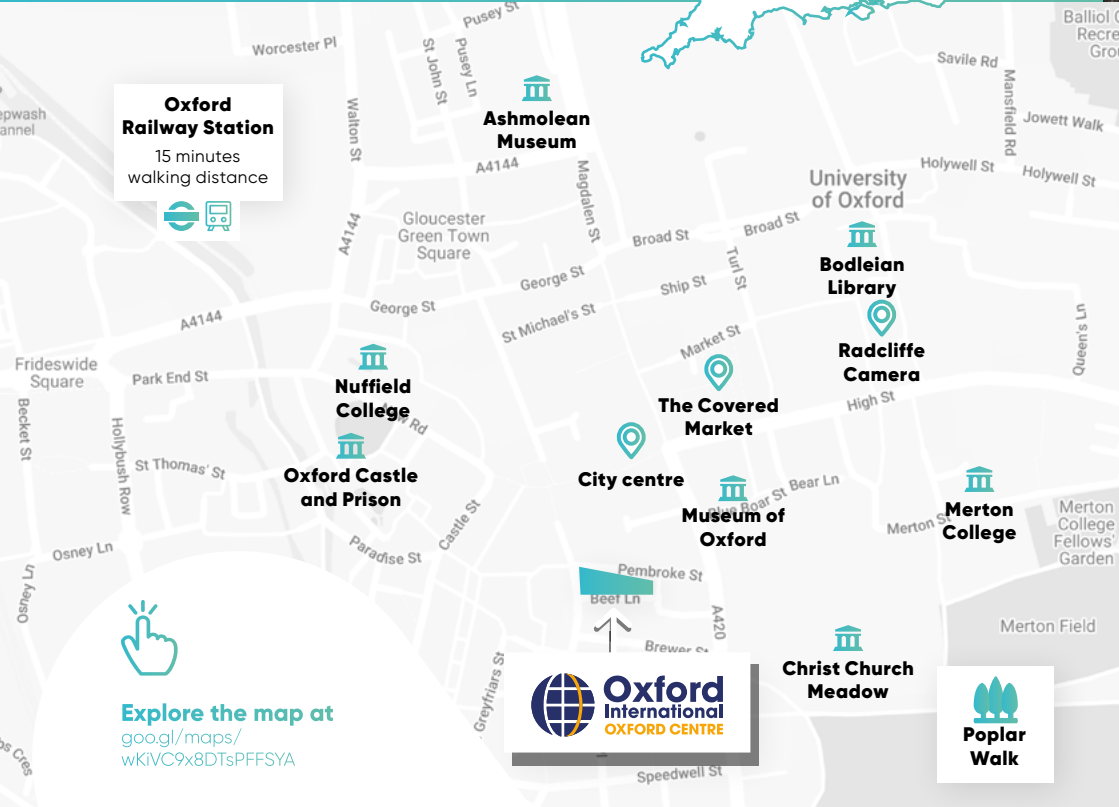
Scan to watch

Oxford Centre campus

Our campus is located in a charming building in the heart of the city. Home to the oldest university in the English speaking world, Oxford is teeming with history, culture and learning. Oxford is also a bustling cosmopolitan city, allowing you to truly immerse yourself and feel at home.



OXFORD



Oxford Railway Station
15 minutes walking distance

Ashmolean Museum

University of Oxford

Bodleian Library

Radcliffe Camera

Nuffield College

Oxford Castle and Prison

The Covered Market

City centre

Museum of Oxford

Merton College

Christ Church Meadow

Oxford International OXFORD CENTRE

Poplar Walk

Explore the map at
goo.gl/maps/wKiVC9x8DTsPFFSYA

About Oxford

The centre at Oxford is small enough to explore on foot and within easy walking distance of the bus and railway stations. Oxford is a youthful and cosmopolitan city with plenty to see and do. There are dozens of historic and iconic buildings, including the Bodleian Library, Ashmolean Museum, Sheldonian Theatre, the Christchurch cathedral and the University of Oxford Colleges. You can enjoy Oxford's bookshops, galleries and museums at your leisure—and even hire a punt or rowing boat over the river that flows through the city. In the city centre you will find lots of shops, cafés, restaurants, theatres, cinemas, pubs and clubs. There are plenty of green spaces too: riverside walks, the university parks and college gardens.

FACILITIES

-  Wi-Fi
-  Computer Access
-  Self-study room & Academic Support
-  Social space with table football
-  Student counselling
-  University counselling
-  Interactive whiteboards
-  Library



Student Experience

At the Oxford Centre, you can socialise with your peers and fully embrace the city's lively attractions and atmosphere through social activities and bespoke social programmes. These create unforgettable memories while creating opportunities for you to hone your English skills in authentic and enjoyable settings.



'My biggest support here are my classmates, who are also my friends. We are very collaborative and we see each other as family'

Sheila Putri, Indonesia



Embrace the best Oxford has to offer



Study Club



Conversation Club



Sports



Creative Activities



Cultural Events



Excursions & Tours

WELCOME PACK

All students at the Oxford Centre have a choice of one of the following offers for the duration of their studies:



Pure GYM Membership
Enjoy 24/7 access at any Pure GYM location.



Netflix Subscription
Access the entire Netflix library anywhere.

Bespoke social programmes

The bespoke social programmes are tailored to immerse you in the best experiences the UK has to offer whilst providing a wide range of key industry insights.



BMW Mini Tour

Embark on a captivating journey to witness the fascinating aspects of car manufacturing. Immerse yourself in a cutting-edge facility where thousands of individual components seamlessly converge, producing up to 1,000 BMW Minis every day. Gain insights into the intriguing prospects of tomorrow's automotive landscape.

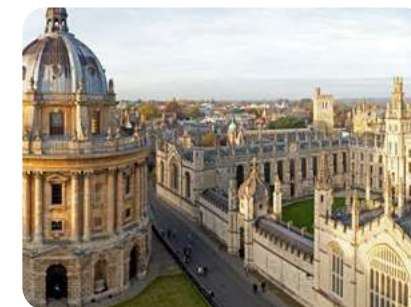


Business & Economics Trips to London

Unlock the doors to a captivating business study trip in London. Immerse yourself in the pulsating heart of this global financial hub and witness the birth of entrepreneurial aspirations. The city offers unparalleled opportunities for students to observe firsthand the dynamics of an international economic centre.

University of Oxford Maths Institute

Join us on this visit as we take you on a brief but captivating journey through the building's fascinating spaces, immersing you in its rich history. You will also witness the symbolic laying of the Penrose Paving, an emblematic feature that adds to the building's allure.



Pitching and Presenting

This workshop will take place at Oxford Brookes University. Led by Sally Hindmarch, author of 'Step Out from the Shadows', students will gain invaluable skills to make an impactful first impression, project authenticity and conviction, and comfortably pitch business ideas anytime, anywhere.



London Business Innovation Visit

Located in Shoreditch, witness the Silicon Roundabout and why students and corporate groups alike are drawn to this area in search of inspiration. This educational tour unveils the foundations, evolution, and innovative spirit that define the thriving business ecosystem of the region.



Academic support

During your time at the Oxford Centre our tutors and staff will support you all the way to ensure you develop the skills you need to be more confident in your future studies.



Regular tutorials with all academic staff, tutors and the Academic Manager.



Lectures and talks from relevant speakers working in real businesses around Oxfordshire.



Classes are interactive and involve seminar style discussions, presentations and student led learning.



You will be supported to reach your academic goals through supervised self-study sessions, focused assessments and study skills.



All students receive **personalised advice** and support from their tutors.

Meet Kelly our student at the Oxford Centre



Scan to watch

'Our counsellor, Maeve and teachers are also fantastic - we have 1 to 1 counselling activities and talk to our teachers about our challenges so we can solve them together.'

Sheila Putri, Indonesia



'I just love the city of Oxford. It's been a dream to come here, and I'm just so happy to be here'

Maggie Tjen, Indonesia



Life in Oxford

The city of Oxford itself is a beautiful gem, steeped in history and intellectual brilliance. Walking through its cobbled streets, one can't help but be awestruck by the stunning architecture that spans centuries. From the iconic spires of Oxford's colleges to the medieval charm of the city centre, every corner exudes an air of academic prestige.

Oxford's intellectual legacy is evident in its prestigious university, renowned as one of the world's foremost learning centres. The city's scholarly atmosphere fosters a vibrant academic community, attracting researchers and students from all corners of the globe.

However Oxford is not just a city for study, but also a place with a lively social scene. Quaint pubs, charming cafes, and bustling markets offer opportunities for relaxation and interaction. The city's rich cultural tapestry is woven through its museums, theatres, and galleries, providing a wealth of artistic and cultural experiences.

With its mix of intellectual heritage, cultural richness, and stunning landscapes, life in Oxford is never dull.

Vibrant culture

Punctuated by iconic events like the traditional Oxford Mayday Festival, where locals and visitors revel in music, dance and food. Or the Henley Royal Regatta, an annual rowing spectacle at Henley-on-Thames, drawing enthusiasts from across the globe.

Step into the past

The city boasts the locations where the magical world of Harry Potter come to life. Wander through the hallowed halls of Christ Church, marvel at the grandeur of the Bodleian Library, and explore the spellbinding ambience of New College.

Explore

Beyond the city limits, Oxfordshire offers a haven for outdoor enthusiasts. Embark on extensive mountain bike trails that wind through breathtaking scenery. From rolling hills to serene lakes, the region's landscapes inspire awe and wonder.

Accommodation in Oxford

We provide safe, secure and welcoming accommodation that gives you the independence to explore. During your time with us, you can choose to stay with a host family or in one of our residences. Whichever option you choose, we will ensure your stay with us is safe, comfortable and fun.

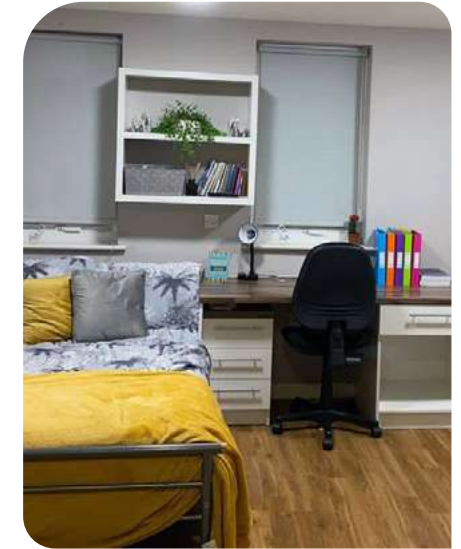
INCLUDED

-  Wi-Fi
-  Utility bills
-  Shared kitchen/dining area
-  Study space in bedroom
-  Laundry facilities



The Mews

The Mews is a property comprising of single en-suite bedrooms in apartments of 4, 5 or 6 bedrooms with a shared kitchen and dining area. Located in a quiet residential area but still only a short bus-ride from the school.



Student Castle

Perfectly located in the heart of Oxford, the Student Castle residence is a newly built student residence with excellent facilities, such as a fully equipped gym open 24/7 and private study spaces.

You'll be able to choose from a range of rooms, from shared flats to private studios and apartments.



Homestay

Our Homestay accommodation offers you the opportunity to live with friendly and welcoming hosts in their home. You'll be immersed in the English language as well as getting to know the local culture and customs.*

*We work with trusted and experienced agencies offering accommodation in line with the British Council and English UK guidelines.



London Centre

Pathway College



Welcome to the London Centre

The Oxford International London Centre has been validated by the University of Greenwich offering international students an alternative route into university through a level 3 International Foundation Diploma.

You will receive high quality teaching and a high level of support to allow you to settle quickly and adapt to your new life. This is to ensure you will quickly feel able to join in the exchange of ideas that help to make our college, your college.

We value your background, your ideas and your commitment to studying in a new educational environment. As a team and as a college we want you to participate with us in an educational environment that encourages in all of us the constant need to learn and improve.

The London Centre prepares students with the qualifications needed to progress into university and with successful completion of the International Foundation Diploma award in business (stage 1) students will have access to a range of degrees at a number of UK university partners.

We wish you all the best during your time here.

Your Guide to an Academic Journey at the London Centre



London Centre campus

One of the many reasons students decide to study at the London Centre is its location. It's just 2 minutes away from the University of Greenwich and a short distance away from the 'big city' of London.

Rated the best city in the world for students by QS Best Student Cities 2023, there is something for everyone; be it eating, sports or entertainment.



Explore the map at
goo.gl/maps/AqWEs96KnbwtyyKA9

Campus Facilities

You will be taught at the London Centre in Greenwich and will have full access to all the resources offered by the University of Greenwich.

This includes the Students' Union, Counselling Centre, Student Advice Service, and societies. Students will also have access to the extensive library services on Stockwell Street, part of the University of Greenwich.

KEY FACTS

-  Wi-Fi
-  Computer Access
-  Self-study room & academic support
-  Social programme
-  Student counselling
-  University counselling
-  Interactive whiteboards



Social programme

Our bespoke social programmes are designed to provide you with the opportunity to socialise and immerse yourself in the local culture – sharing truly unforgettable experiences whilst being able to put your new English skills to the test in fun and natural environments.

Meet Nic the College Director at the London Centre



Bespoke social activities



Study Club



Conversation Club



Sports



Creative Activities



Cultural Events



Excursions & Tours



Weekend Excursions & Tours

At the London Centre you'll have the opportunity to join weekend excursions and sightseeing tours to some of the most popular locations in the city and in the UK, such as Thorpe Park, The Making of Harry Potter and many more!




Best City in the World
for the 7th
year running
by Resonance
Consultancy 2023



Life in London

Capital of the UK and home of the 2023 Eurovision Song Contest, London needs no introduction.

A thriving global metropolis with something for everyone, the city is as famous for its retail, restaurants, architecture and culture as it is for Buckingham Palace and Big Ben. Whether it's science, history, art, design or fashion that interest you, London has a huge range of world-class museums and galleries to explore – many of which are free!

The city can be a bit overwhelming, but do not worry! Our staff and tutors help our students every day. They're always available to guide you in this new chapter of your life and have some of the best tips and suggestions in town.

Museums and Galleries

London has nearly 750 art galleries and museums – ranging from large Institutions like the National Gallery, the Science Museum to small specialist studios.

Music

London offers everything from global artists performing in large stadiums to live bands playing in bars.

Theatre and Cinema

London has a thriving and diverse theatre scene, with major musicals and plays running in the West End as well as independent productions playing in local theatres across the capital.

Shop

From chain stores on Oxford Street and upmarket shops in Covent Garden, to open-air stalls and street markets throughout the city, London caters for every taste and budget.

Accommodation in London

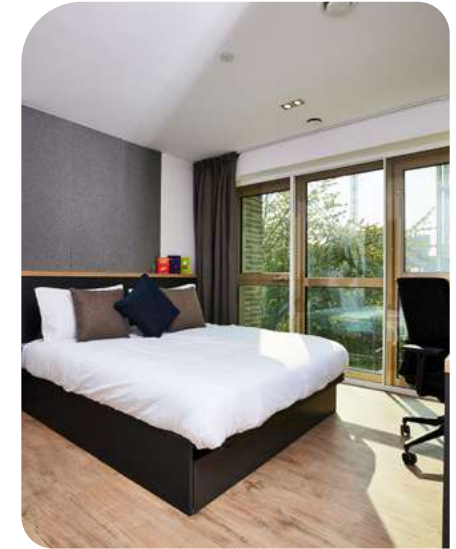
We provide safe, secure and welcoming accommodation that gives you the independence to explore. Whether you choose to live in a residence or homestay, we will ensure your stay with us is safe, comfortable and fun.



Vita

Vita Student London residence is located in Lewisham, a short distance from Greenwich with fantastic transport links into central London.

The residence benefits from a shared gym, ample study space, private dining rooms and social hubs. It is the ideal place to stay after a long day of exploring everything the capital has to offer!



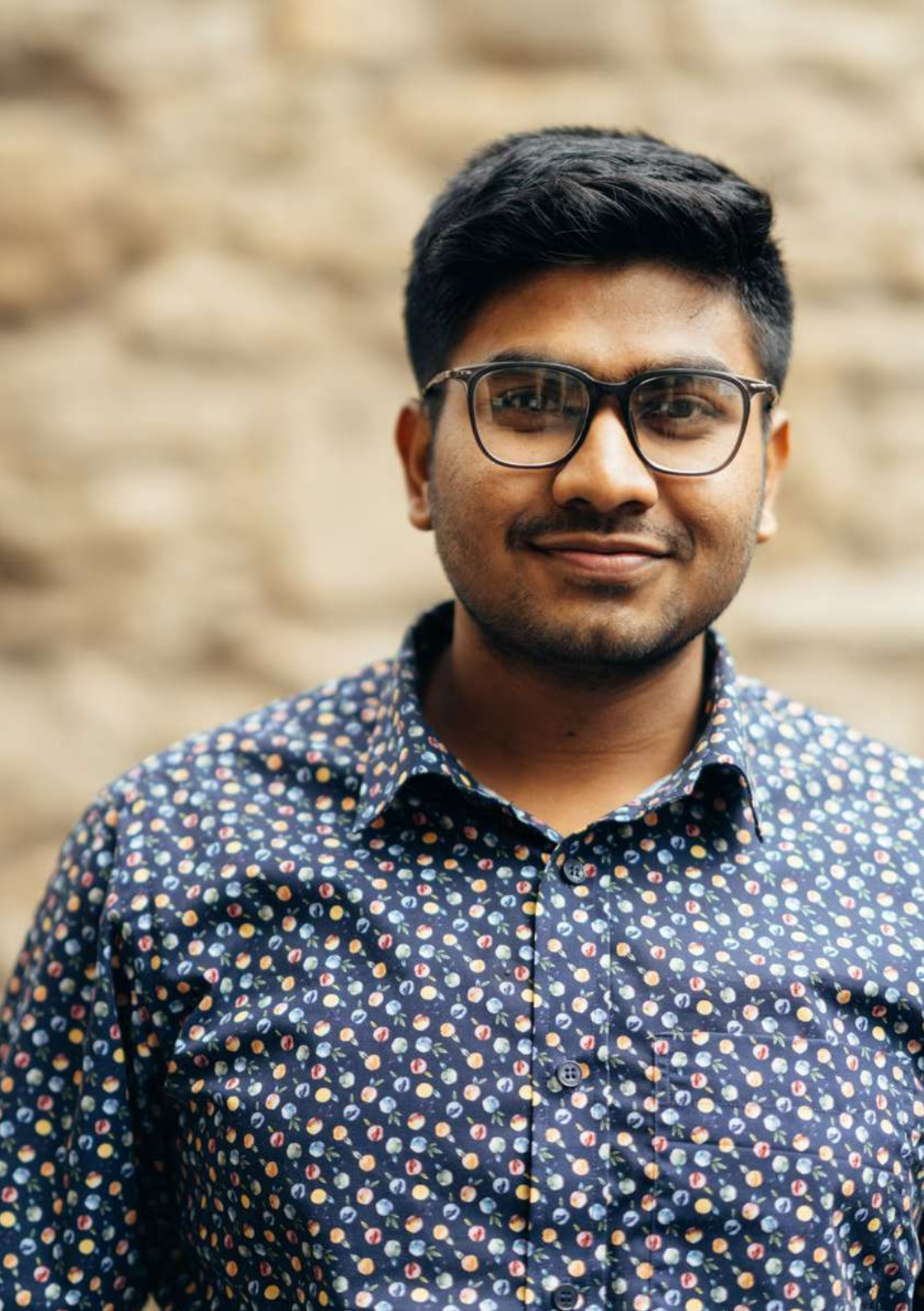
Homestay

Experience life in a British home getting to know the local culture and customs of this multicultural country.

Living in a homestay increases your chance to learn and use English in a supportive environment.

You will have your own bedroom in a house in the local area and will share the social space and facilities with the host family.

*In Greenwich and Oxford we work with trusted and experienced agencies offering accommodation in line with the British Council and English UK guidelines.



Oxford International *Digital*

Oxford International Pathway College *Digital* gives you the freedom to develop your English language, academic study skills, and subject specific knowledge from your home.



You will receive access to the same high-quality course content as delivered at our colleges



Guided self-study and pastoral support with flexible options to meet your needs



Full support for degree enrolment to top universities



Develop in-demand skills and knowledge that is applicable to various sectors



Gain university level study skills and enhanced career opportunities.

Your digital pathway to university

- Join live lectures with expert teachers from the UK
- View recordings of lectures if you're not able to attend live sessions at your convenience
- One-to-one live video sessions with a pastoral support manager
- Participate in interactive virtual student workshops.

Pre-Sessional English (PSE)

The PSE is a 6 or 12 week programme that provides you with intensive English language training and assessments. Upon successful completion you may progress onto one of Oxford International's Colleges.



oidigitalinstitute.com/courses/higher-education/pre-sessional-english

International Foundation Programme

Our foundation programme prepares you for your undergraduate degree by teaching essential subject knowledge, enhancing your English language skills, and raising your awareness of university life. Upon completion, you will be fully prepared to start your degree at your chosen university.



oidigitalinstitute.com/courses/higher-education/international-foundation-programme

Pre-Master's in Business and Management

The online Pre-Master's in Business and Management prepares students for postgraduate studies. You learn English, study skills, and business modules, and bridge gaps in academic life. Upon completion, students are ready to start their master's degree.



oidigitalinstitute.com/courses/higher-education/pre-masters

Pre-PhD Programme

The online Pre-PhD programme is designed to bridge the gap between master's level qualifications and doctoral study. The programme covers 60 credits and aims to enhance your research knowledge and critical thinking skills, as well as improve your writing ability. After successfully completing the programme, you will be ready to pursue a PhD at any UK university.



oidigitalinstitute.com/courses/higher-education/phd-preparation

Your progression route

Just like at our colleges, when you who study one of our digital pathway programmes, you can progress to one of our partner universities. You will receive bespoke support throughout your stay with us and the application process - from selecting the best institution to submitting your application.

Progression Universities	IFY	PMP
University of Reading	•	
University of Dundee	•	•
University of Bristol	•	•
University of Roehampton	•	•
University of Central Lancashire	•	•
University of Hertfordshire	•	•
University of Strathclyde	•	•
UWE Bristol: University of the West of England	•	•
University of Hull	•	
Anglia Ruskin University	•	•
Bournemouth University	•	•
Staffordshire University	•	•
De Montfort University	•	•
Coventry University	•	•
Ravensbourne University London	•	•
Swansea University	•	
IU International University of Applied Sciences		•





London Centre address

259 Greenwich High Rd, London
SE10 8NB United Kingdom

Oxford Centre address

36 – 37 Pembroke Street, Oxford
OX1 1BP United Kingdom

Contact us

info@oxfordinternational.com